

MANUFACTURER OF
ALL TYPES OF
TRANSFORMERS WITH
HIGH EFFICIENCY TO
ENHANCE THE
ECONOMY

Contact us

Corporate Office:

At Village: Bhasaria, District: Mehsana -
384002, Gujarat

Unit-1:

504, GIDC Estate, Waghodia, Vadodara
- 391760

E-Mail: info@sumeshengineers.com

Web: www.sumeshengineers.com



SUMESH ENGINEERS

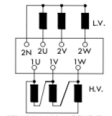
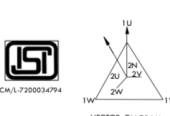
SINCE 1992

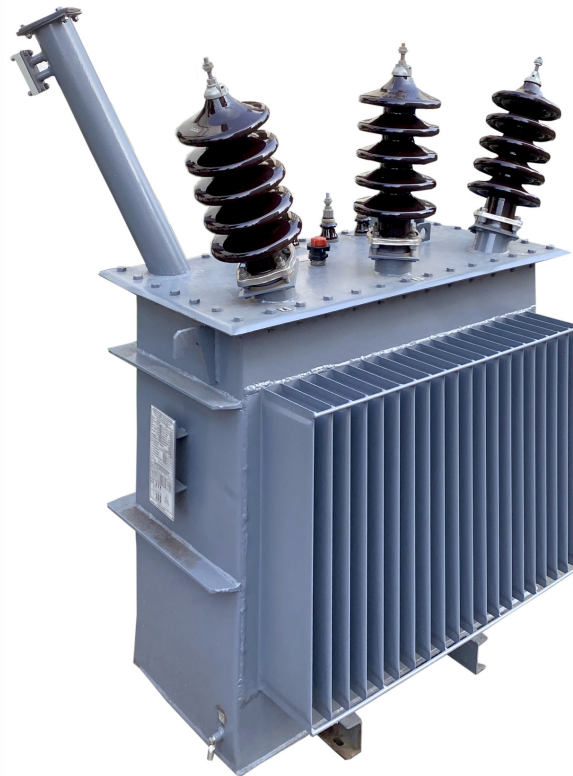
ABOUT US

Established in 1992, force unleashed into the market with a relentless and unwavering determination to succeed. A spirit charged with energy, creativity and ambition to become the most admired transformer manufacturing company in the power sector.

We emphasise on the fact that quality, reliability and ethics are the most common denominators of our product range.

Our expertise to design, manufacture, test and maintain transformers ranging from 5kVA to 2500kVA upto 33kV voltage class. With the state of art facility and modern testing equipments, we can manufacture 2000MVA per annum.

| DISTRIBUTION TRANSFORMER | |
|---|---|
| SE SUMESH ENGINEERS PVT. LTD. 504, GIDC ESTATE, WAGHODIA, VADODARA | |
| <input type="checkbox"/> PHASE TRANSFORMER | SERIAL NO. _____ |
| STANDARD _____ | ENERGY EFFICIENCY LEVEL _____ |
| kVA _____ | MAX. TOTAL LOSSES AT 50% RATED LOAD _____ W |
| VOLTS AT NO LOAD _____ | L.V. _____ |
| AMPERES _____ | L.V. _____ |
| BL kVA/Mrms _____ | L.V. _____ |
| BL kVA/Mrms _____ | L.V. _____ |
| FREQUENCY _____ Hz | TEMP. RISE _____ °C |
| VECTOR GROUP _____ | IMPEDANCE VOLTAGE _____ % |
| TYPE OF COOLING _____ | TOTAL MASS _____ kg |
| WINDING _____ | VOLUME OF OIL _____ ltrs |
| TAPPINGS _____ | MONTH & YEAR OF MFG. _____ |
| CUSTOMER _____ | DATE OF DISPATCH _____ |
| REFERENCE _____ | GUARANTEE PERIOD _____ |
|  | |
|  | |
| MADE IN INDIA | |



PORTFOLIO

STATE ELECTRICITY BOARDS

Distribution Transformers ranging from 10kVA to 500kVA, upto 33kV voltage class procured by SEB for their smooth operation in distributing power from agriculture to residential to industrial sector.

TURNKEY PROJECTS

Distribution Transformers ranging from 10kVA to 2500kVA, upto 33kV voltage class procured by turnkey project/contractors to distribute power where unfeasible for SEB.

PRIVATE CUSTOMERS

Distribution Transformers (including CSS) from 200kVA to 2500kVA, upto 33kV voltage class where their load demand is greater than 100kW.

ISO - 9001:2015, BIS &
BEE CERTIFIED FIRM

MISSION

To emerge as trend setter and preferred partner in the power sector offering the most premium quality of transformers through highly professional team and value driven business associates, thereby creating the highest level of customer satisfaction.

VISION

A prominent global manufacturer and world leader in the field of power & transmission, promoting the cause of energy savings through innovation and customisations of products to set quality benchmarks for all its products and services.



MANUFACTURING FACILITIES

- Plant capacity to manufacture 3000MVA per annum
- Crane capacity of 20 ton
- Plant area of 150,000 sq. ft.
- Calibrated testing facilities for upto 33kV
- Manual/Software based designs
- Paint-booth facility
- Dustproof-winding section
- Conductor Enamelling Machine
- DPC Machine
- Automatic CNC Cutting Machine
- CRGO Slitting Machine

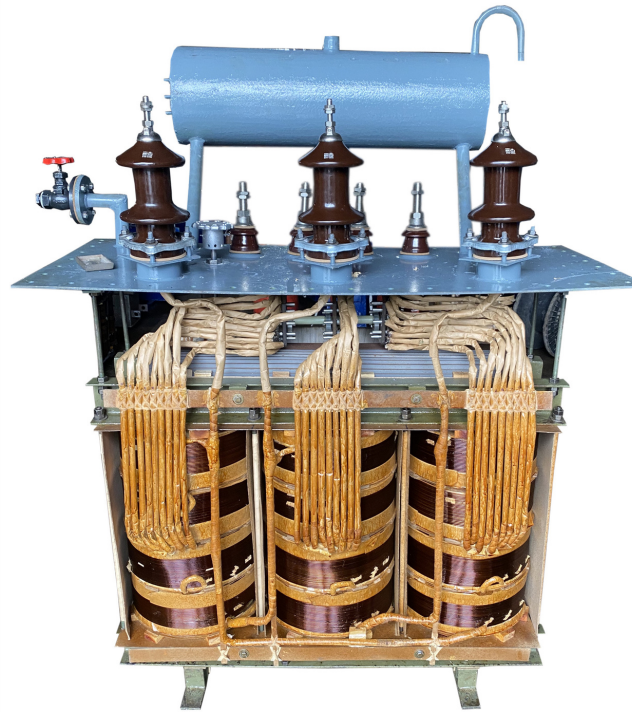
PRODUCT RANGE

- DISTRIBUTION TRANSFORMER
- COMPACT SUB-STATION TRANSFORMER (CSS)
- DRY-TYPE TRANSFORMER (CRT & VPI)
- SOLAR TRANSFORMER
- CRGO CORE & LAMINATIONS
- CABLES & CONDUCTORS
- MS FABRICATED STRUCTURES



FUTURE PLAN

With its undaunted devotion to leading edge technology, cost-effective products and unparalleled customer service, we aim to be at the forefront of the industry. We intend to reinforce dedicated base Research and Development to implement improved, both technically and economically, versions of transformers providing total satisfaction to customers. We intend to continue setting the highest possible quality benchmarks in the coming years. We shall continue to innovate products and services to meet ever changing needs of the industry with a total commitment and dedication.



STANDARDS

- IS-1180 (PART-1) : 2014
- IS 2026
- IEC 60076
- BS 171

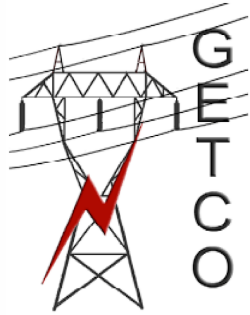
AND THEIR REVISIONS.....

TESTING FACILITIES

- Mezzanine floor testing lab
- Control Panel with power analyser
- Variac with motorised control
- Intermediate transformer capable upto testing of 2500kVA
- High voltage tester upto 75kV
- Double voltage double frequency generator
- Digital resistance & ratio meter
- Digital insulation resistance tester

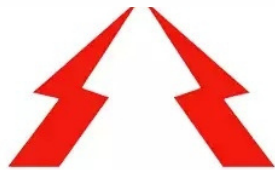


STATE ELECTRICITY BOARD/CLIENTS



APPROVED BY

APPROVED BY:



MAHAVITARAN
Maharashtra State Electricity Distribution Company Limited

PROMOTER OF

